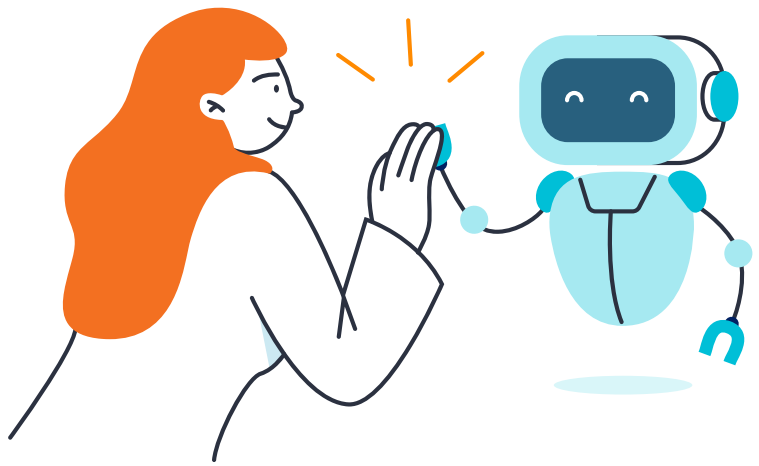
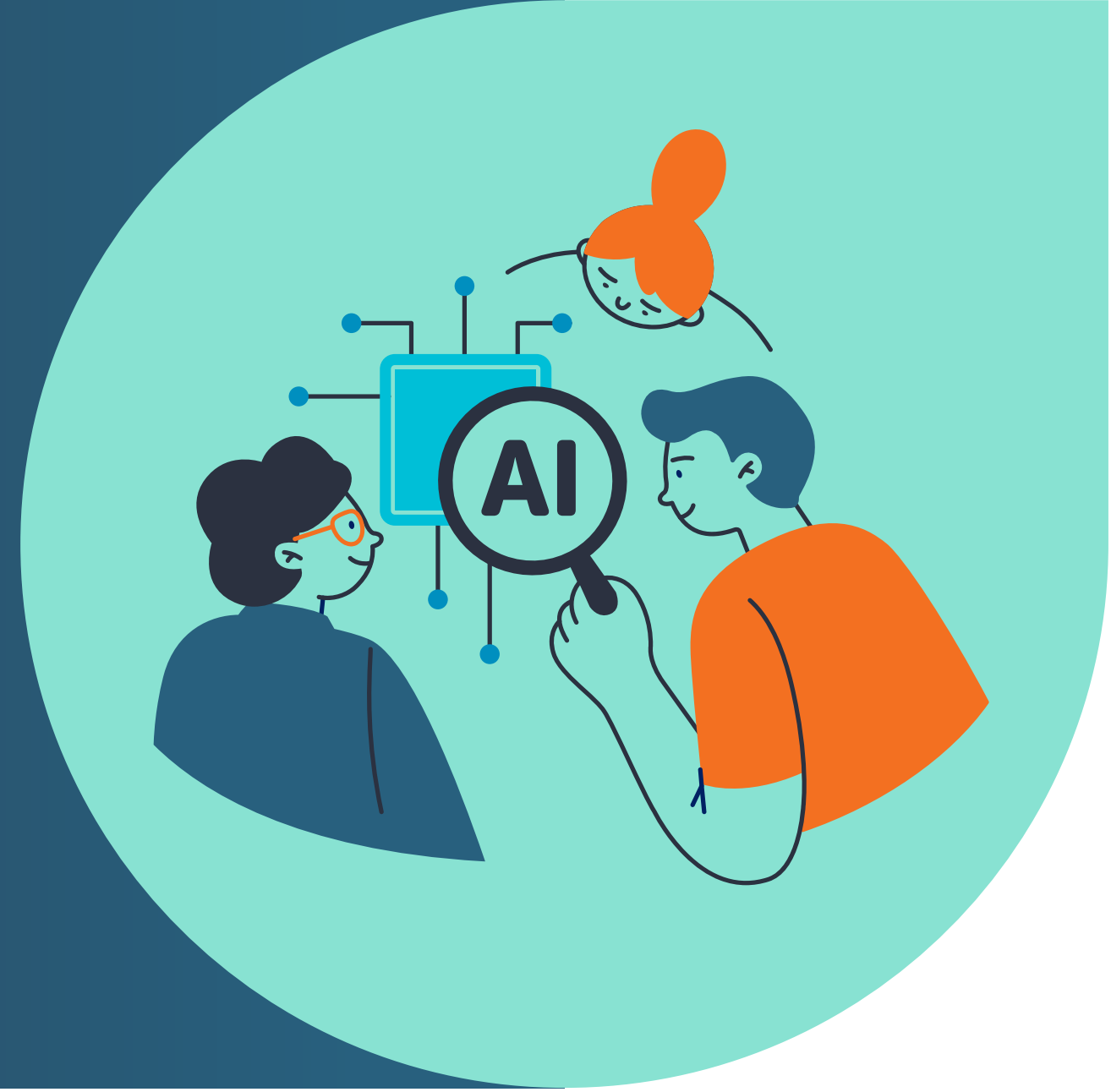


# Meet your new **work partner** — AI

AI is becoming more integral to how we work, but are you putting it to work in the right ways?



## 5 critical things you need to know about working with AI

01

### How AI will **impact the workforce**

GenAI will have multiple effects on work and the economy, including the potential to reshape traditional roles, create new job opportunities, and transform productivity.

### How AI will **impact jobs**

Investing in advanced AI capabilities and complementary infrastructure can steer labor market effects in a positive direction.

02

03

### AI is your future partner, **not replacement**

The power of AI lies not in replacing workers, but in augmenting and enhancing the unique strengths that people possess.

### How to incorporate AI **into your organization**

It's not a question of whether to implement AI. It's a question of the best strategy to do it as soon as possible, while preparing both your organization and employees.

04

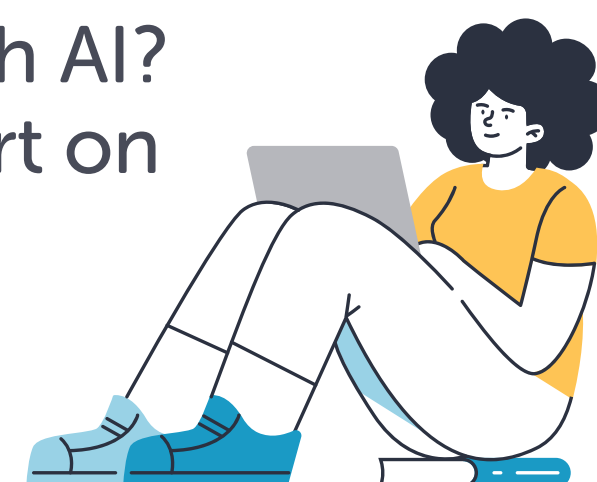
05

### How to advance AI **responsibly**

With great technological advancements, like AI, comes great responsibility. Ensuring diversity and mitigating bias are important, while taking a wider view to include educating workers and organizational accountability.

Ready to revolutionize your work with AI? **Dive into our e-book** for a jump-start on mastering AI collaboration and start transforming the way you work.

[Get the e-book](#)



## Workforce transformation **starts with AI**

Our [Talent Intelligence Platform](#) is designed to help you effectively understand, engage, and retain your workforce. Find best-fit talent, identify and nurture talent, and create personalized learning and career paths for all employees. Our platform provides visibility into the skills you'll need to become a talent-centered organization ready for anything. [See how we work at eightfold.ai.](#)